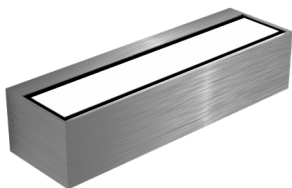


## WALLY DATASHEET

### SURFACE APPLICATION

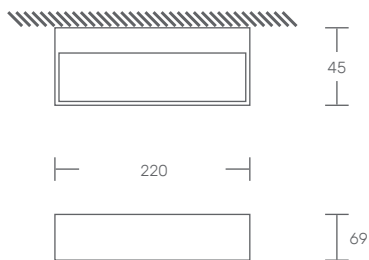
LED | 230V/50Hz | IP65 | IK08



STANDARTS: EN 60598-1, EN 60598-2-1



### TECHNICAL DRAWING



### PRODUCT DESCRIPTION

LED luminaire with direct and indirect light for surface application on the wall.  
Stainless steel body.  
Tempered glass diffuser.

### LIGHT SOURCE

LED COB 16W  
CRI>80, L80/B50, FP>0.9  
50.000 of useful life.

### AVAILABLE COLOR/FINISH



1-white/ 4-anthracite/ 9-stainless steel

### AVAILABLE LIGHT TEMPERATURE/ COLOR



3000K / 4000K

### AVAILABLE DIFFUSER



F - frosted

### AVAILABLE DRIVER

1- HF - ON/OFF

#### WALLY

POWER (w)	FLOW (lm)	CODE
16	1000	WALLY.016.LK.AED