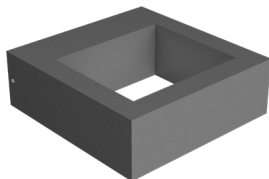


## PORTAL 9 DATASHEET

### SURFACE APPLICATION

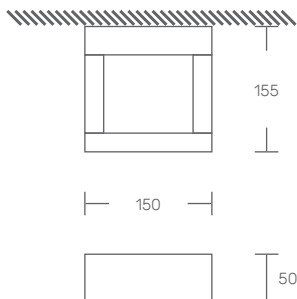
LED | 230V/50Hz | IP54



STANDARTS: EN 60598-1, EN 60598-2-1



### TECHNICAL DRAWING



### PRODUCT DESCRIPTION

LED luminaire with direct and indirect light for surface application on the wall. Injected aluminum body, thermo-lacquered with anti-aging additive. Tempered glass diffuser.

### LIGHT SOURCE

LED COB 9W  
CRI>80, L80/B50, 50.000 of useful life.

### AVAILABLE COLOR/FINISH



4-anthracite

### AVAILABLE LIGHT TEMPERATURE/ COLOR



3000K / 4000K

### AVAILABLE DIFFUSER



F - frosted

### AVAILABLE DRIVER

1- HF - ON/OFF

#### PORTAL

POWER (w)	FLOW (lm)	CODE
9	600	PORTAL9.009.LK.AED