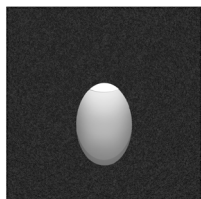


PIK Q DATASHEET RECESSED APPLICATION

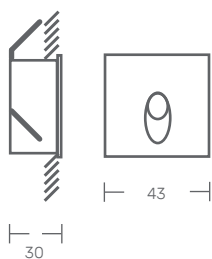
LED | 230V/50Hz | IP54



STANDARTS: EN 60598-1, EN 60598-2-1



TECHNICAL DRAWING



PRODUCT DESCRIPTION

LED luminaire for recessed application, with trim.

Injected aluminum body, thermo-lacquered with anti-aging corrosion additive.

Opening beam angle: 65°

LIGHT SOURCE

Driver LED, 220-240VAC -50/60Hz
CRI>80, FP>0.9, 50.000h of useful life.

AVAILABLE COLOR/FINISH



1-white/ 2-black

AVAILABLE LIGHT TEMPERATURE/ COLOR



3000K/ 4000K

AVAILABLE DIFFUSER



F - frosted

AVAILABLE DRIVER

1- HF - ON/OFF

PIK Q

POWER (w)

2

FLOW (lm)

96

CODE

PIKQ.002.LK.AED