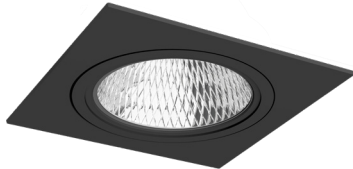


## BIL 155 Q DATASHEET

RECESSED APPLICATION

LED | 230V/50Hz | IP20



### PRODUCT DESCRIPTION

Adjustable LED luminaire for recessed use, with trim.  
Epoxy polyester lacquered aluminum body.

### LIGHT SOURCE

GU10 Lamp  
or  
COB LED  
Driver LED, 220-240VAC-50/60Hz.  
CRI>90, 35.000h of useful life.

### AVAILABLE COLOR/FINISH



1-white/ 2-black/ 4-anthracite/ 6-grey

### AVAILABLE LIGHT TEMPERATURE/ COLOR

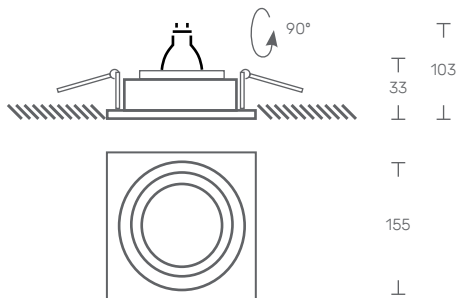


2700K/ 3000K/ 4000K

STANDARTS: EN 60598-1, EN 60598-2-1



### TECHNICAL DRAWING



### AVAILABLE DRIVER

X- Without driver  
1- HF - ON/OFF  
2- DALI - Flow regulation  
3- 1-10V - Flow regulation

#### BIL 155 Q - LED GU10

LED GU10	POWER (w)	FLOW (lm)	CODE
	15	1100	BIL155Q.015.LK.AED
	-	-	BIL155Q.000.LK.AED

#### BIL 155 Q - COB LED

35	2465	BIL155Q.035.LK.AED
----	------	--------------------